

SELL IT

If it ain't broke, don't bin it.
Turn your preloved stuff into cash and fund your summer fun!
(Better for the environment and your bank balance).

Depop

Gumtree

Ebay

Vinted

Facebook Marketplace



DONATE IT

Got a good quality, preloved item but don't have time to sell it? Donate it instead!



Scan the QR code for a map of Bristol's charity shops



Bristol Waste Reuse Shops

There's one at every recycling centre!



Donate your spare tech

Make a difference by recycling or donating tech you don't need to the Digital Inclusion Scheme

Bristol Big Give

Check online to find local drop off points



RECYCLE IT



If you can't rehome something, recycling it is the next best thing:

Household recycling collections Check your bin day and find out what goes in which box online bristolwastecompany.co.uk/getitsorted

Reuse and recycling centres Visit for free by booking online. Bring your student ID with you!

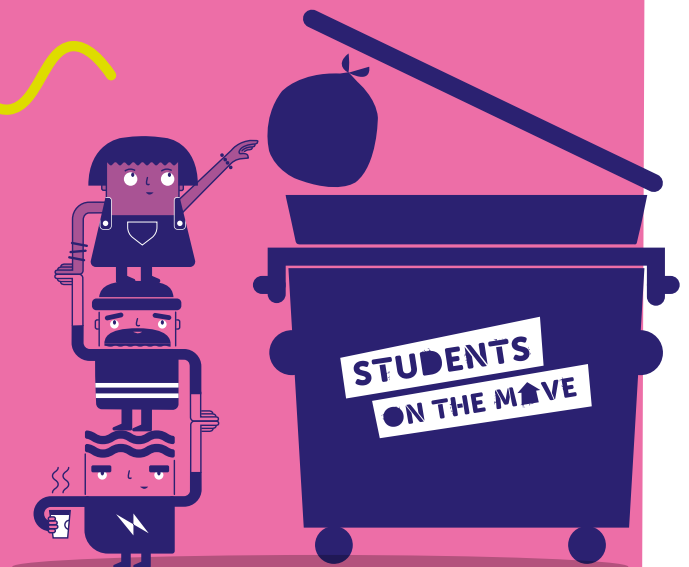
Bulky items Can be collected from your door from just £25. To book your pick-up, visit bristol.gov.uk/bulkywaste

BIN IT

Can't rehome or recycle it?
Start sorting early to avoid
a stressful moving day.

Use your waste bin, an on-street Students On The Move bin or hire an extra large bin from us with your student discount. Leaving waste on the pavement could land you with a hefty fine and put your tenancy deposit at risk.

bristolwastecompany.co.uk/students



MY CHECKLIST

- ✓ **Take 5, grab a seat and read this leaflet**
- **Save for summer** by selling your preloved stuff.
- **Donate useful things** to the Big Give, the Reuse Shops or charity.
- **Use your student ID** to visit one of the city's recycling centres for free. Book your visit online
- **Don't have wheels?** Book a bulky waste collection from the council for as little as £25.
- **Check your bin day calendar** and put your bins out (with time to bring them in again) before you leave.
- **Use your student discount** to hire a big bin for all your other rubbish. Call 0800 061 4321 or email commercial@bristolwastecompany.co.uk

Don't spoil your summer!

Your responsibilities

Your university expects you to be a considerate member of the community (which is pretty easy to do if you follow our checklist). University guidelines say that "non-compliance with council waste and recycling collection procedures (rubbish goes in the bin, not next to it) can lead to disciplinary action being taken". ...And that might put a downer on your summer plans.

Landlord's responsibilities

Your landlord needs to ensure your house is structurally sound, is safe and in good repair, and that there is gas, power and hot water. Your landlord is not responsible for rehoming the desk and bookshelves you don't want to take home with you.

Follow our advice above and get set for a stress-free moving day.

PSSST!

Don't risk your tenancy deposit by leaving rubbish behind!

DON'T RISK YOUR TENANCY DEPOSIT!

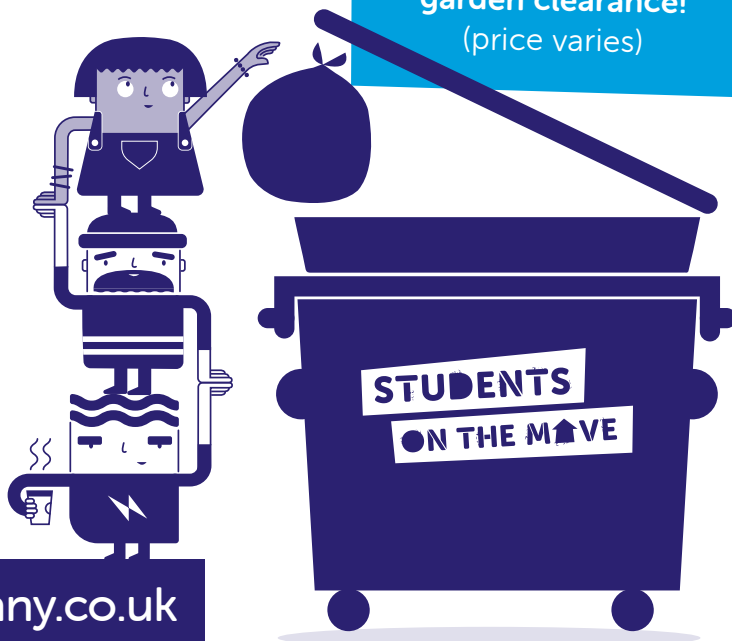
If you can't sell, donate or recycle unwanted items, you can get student discounts on really big bin hire.

Hire a 1100l bin for move-out week (from just £75, a lot less than losing your deposit) and you and your housemates can get rid of waste safely, legally and hassle-free. Recyclables will even be sorted and processed by our crews. T&Cs apply.

Hire a really big bin!

commercial@bristolwastecompany.co.uk

0800 061 4321



PSSST!

Waste left on the street, even if it's next to a full bin, is fly-tipping. Fly-tipping is illegal and can result in hefty fines and even a criminal conviction.



Bristol Waste, Bristol City Council and the universities are working together to support students on the move. **Get involved when moving day comes by reducing waste, reusing and recycling everything you can.**

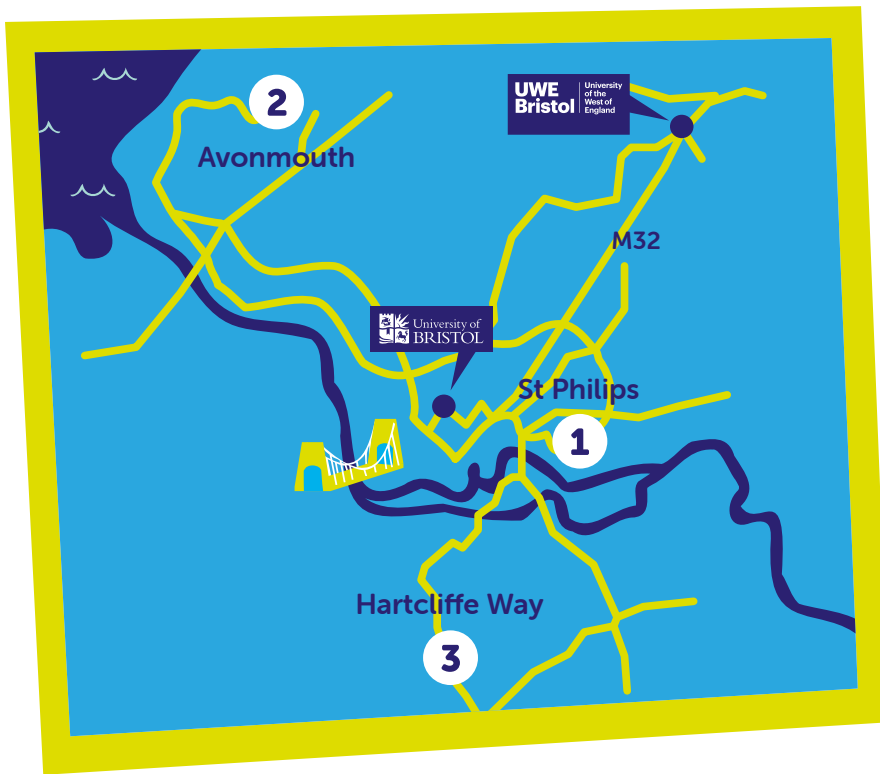


To help **you dispose of recycling waste properly**, we're giving you free access to Bristol's recycling centres, discounts on hiring bins and extra on-street bins during key move-out dates this year.

LOCATIONS

- 1 St Philips Reuse and Recycling Centre**
Folly Ln, Days Rd, Bristol, BS2 0QS
- 2 Avonmouth Reuse and Recycling Centre**
Kings Weston Ln, Bristol, BS11 0YS
- 3 Hartcliffe Way Reuse and Recycling Centre**
Walk, cycle or drive to this site! 83 Hartcliffe Way, Bristol BS3 5RN

Find your nearest Students On The Move bin:
bristolwastecompany.co.uk/students/bins



USEFUL LINKS

Bristol City Council bin day finder: bristol.gov.uk/bins-recycling

Need more info about getting your recycling sorted?
Visit bristolwastecompany.co.uk/getitsorted



GET IN TOUCH!

Bristol Waste Company

Albert Road, Bristol BS2 0XS

general@bristolwastecompany.co.uk

bristolwastecompany.co.uk/students

BRISTOL
waste



UWE
Bristol | University
of the
West of
England