



BRISTOL
waste

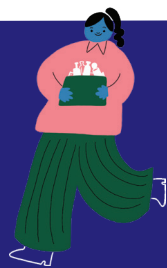
Hey, neighbour!

Find all you need to know about becoming a recycling champion, including information about collection and where to find your nearest Household Reuse and Recycling Centre on our website.

SO Si aad u hesho nooca xaashidan oo turjuman ah fadlan booqo bristolwastecompany.co.uk/sharedbins

PL Przetłumaczoną wersję tej ulotki można znaleźć na stronie bristolwastecompany.co.uk/sharedbins

For a version of this leaflet in black and white with large font, please visit bristolwastecompany.co.uk/sharedbins



Get in touch!

Visit our website

bristolwastecompany.co.uk/sharedbins

Call 0117 922 2100

Email general@bristolwastecompany.co.uk

TRASH TALK!

BRISTOL IS NO.1 ENGLISH CORE CITY FOR RECYCLING

65k

We recycle
64,698 tonnes
annually

Glass can
be recycled
endlessly!



6 recycled tea bags generate enough energy to boil a kettle

YOU COULD SAVE AROUND £1,000 A YEAR BY NOT WASTING FOOD

1 banana skin generates enough energy to charge 2 mobile phones



It takes **95% less energy** to make a can using recycled aluminium



Less than 2% of Bristol's waste sent to landfill last year



1,000,000 RECYCLING COLLECTIONS EACH MONTH

TOP TIPS...



Rinse containers before recycling them.

Give plastic and metal containers a quick rinse to remove food or liquids before putting them in your recycling bins.



Don't bin your batteries! Putting batteries in the bin is a fire risk.

Please take them to a recycling centre or supermarket collection point instead.



Cut, fold and squash cardboard

to fit as much in the bin as possible – and remember to remove any tape!



Use an old paper or plastic bag

such as a bread bag or carrier bag to line your food caddy and keep it clean.



On most bins, the main lid is locked to stop tied bags

of waste going in. Squash and fold your recycling so it fits through the opening on top.



Check you can recycle your items.

Putting non-recyclable or incorrect items into recycling bins could mean the whole lot goes to general waste.

BRISTOL
waste

GET OUR RECYCLING SORTED



Tips, tricks and advice

bristolwastecompany.co.uk/sharedbins

YOUR RECYCLING BINS

LOOK FOR THE COLOUR CODED STICKERS!



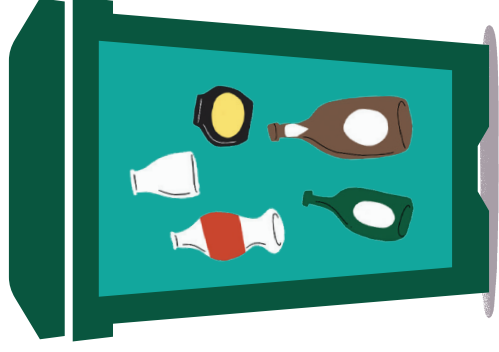
Cardboard and paper

- Flattened boxes (tape removed)
- Paper
- Clean food and drink cartons
- Newspapers and magazines
- Cardboard tubes
- Shredded paper (in a paper bag)



Glass

- Glass bottles and jars of any colour



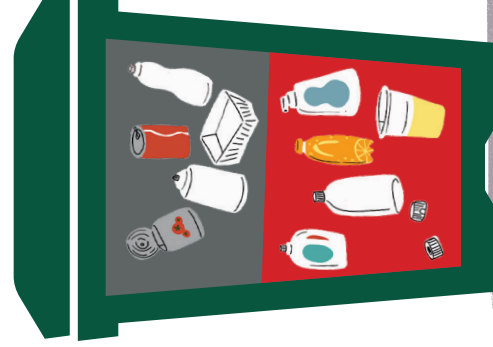
Food

- Cooked and raw food
- Tea bags
- Coffee grounds
- Peelings
- Meat
- Fish and bones



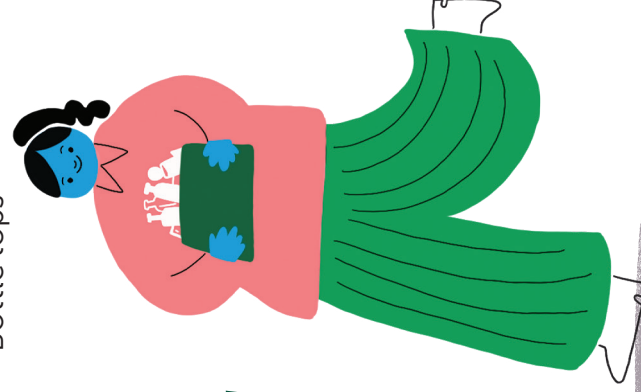
Metal

- Clean food and drink cans
- Clean foil
- Empty aerosols
- Metal lids



Plastic

- Plastic bottles
- Trays and tubs
- Bottle tops



YOUR NON-RECYCLABLE HOUSEHOLD WASTE BIN

Don't be a waster!
Only put things that can't be recycled in this bin.

Don't leave rubbish on the floor – it will not be collected!



Contact your landlord
or Bristol City Council for
bulky waste collections.

bristol.gov.uk/bulkywaste

