

# LET'S GET OUR RECYCLING SORTED



# TOP TIPS...



## **Rinse containers before recycling them.**

Give plastic and metal containers a quick rinse to remove food or liquids before putting them in your recycling bins.

**Don't bin your batteries!** Putting batteries in the bin is a fire risk. Please take them to a recycling centre or supermarket collection point instead.



**Cut, fold and squash cardboard** to fit as much in the bin as possible – and remember to remove any tape!

**Use an old paper or plastic bag** such as a bread bag or carrier bag to line your food caddy and keep it clean.



**On most bins, the main lid is locked to stop tied bags of waste going in.** Squash and fold your recycling so it fits through the opening on top.

**Check you can recycle your items.** Putting non-recyclable or incorrect items into recycling bins could mean the whole lot goes to general waste.



# YOUR RECYCLING BINS

## Paper

- Paper
- Newspapers and magazines
- Paperback books
- Shredded paper (in a paper bag)



## Glass

- Glass bottles and jars of any colour



# YOUR RECYCLING BINS

## Food

- Cooked and raw food
- Tea bags
- Coffee grounds
- Peelings
- Meat
- Fish and bones



## Cardboard & brown paper

- Flattened boxes (tape removed)
- Clean food and drink cartons
- Cardboard tubes
- Greeting cards (no glitter)
- Brown paper



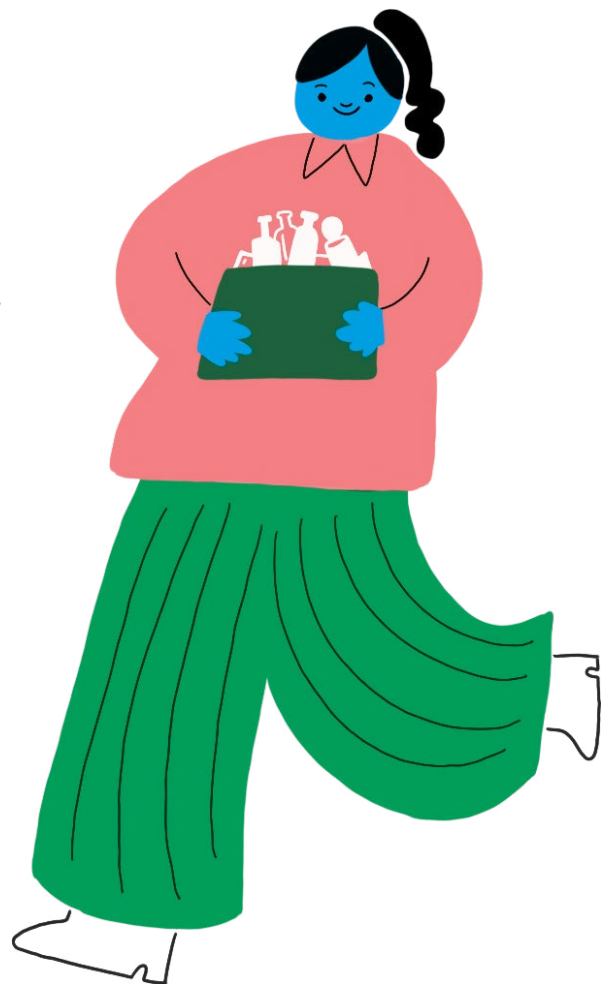
# YOUR RECYCLING BINS

## Metal

- Clean food and drink cans
- Clean foil
- Empty aerosols
- Metal lids

## Plastic

- Plastic bottles
- Trays and tubs
- Bottle tops



# YOUR NON-RECYCLABLE HOUSEHOLD WASTE BIN

**Don't be a waster!**

Only put things that can't  
be recycled in this bin.

**Don't leave  
rubbish on  
the floor –  
it will not  
be collected!**



Contact your landlord or Bristol City Council  
for bulky waste collections.  
[bristol.gov.uk/bulkywaste](https://bristol.gov.uk/bulkywaste)

# TRASH TALK!

BRISTOL IS **NO.1** ENGLISH CORE CITY FOR RECYCLING



We recycle **55,000 tonnes** annually

Glass can be recycled endlessly!



**6 recycled tea bags** generate enough energy to boil a kettle

YOU COULD SAVE AROUND **£700** A YEAR BY NOT WASTING FOOD



**1 banana skin** generates enough energy to charge 2 mobile phones

It takes **95% less energy** to make a can using recycled aluminium



**180,000 tonnes** diverted from landfill last year



**1,000,000 RECYCLING COLLECTIONS** EACH MONTH



**BRISTOL**  
waste

# Hey, neighbour!

Find all you need to know about becoming a recycling champion, including information about collection and where to find your nearest Household Reuse and Recycling Centre on our website.

- SO** Si aad u hesho nooca xaashidan oo turjuman ah fadlan booqo [bristolwastecompany.co.uk/sharedbins](https://bristolwastecompany.co.uk/sharedbins)
- PL** Przetłumaczoną wersję tej ulotki można znaleźć na stronie [bristolwastecompany.co.uk/sharedbins](https://bristolwastecompany.co.uk/sharedbins)

## Get in touch!

**Visit our website**

[bristolwastecompany.co.uk/sharedbins](https://bristolwastecompany.co.uk/sharedbins)

**Call** 0117 922 2100

**Email** [general@bristolwastecompany.co.uk](mailto:general@bristolwastecompany.co.uk)

