

SELL IT

If it ain't broke, don't bin it.
Turn your preloved stuff into cash and fund your summer fun!
(Better for the environment and your bank balance).

Depop

Gumtree

Ebay

Vinted

Facebook Marketplace



DONATE IT

Got a good quality, preloved item but don't have time to sell it? Donate it instead!



Scan the QR code for a map of Bristol's charity shops



Bristol Waste Reuse Shops

There's one at every recycling centre!



Donate your spare tech

Make a difference by recycling or donating tech you don't need to the Digital Inclusion Scheme

Bristol Big Give

Find donation banks on campus



RECYCLE IT



If you can't rehome something, check if it can be recycled. Recycling is an important step in the waste hierarchy and there are lots of easy ways to do it in Bristol:

Kerbside recycling collections happen every week. Find out more: bristolwastecompany.co.uk/getitsorted and fill up your boxes.

Reuse and recycling centres Bring your student ID with you to get in without booking or proof of address.

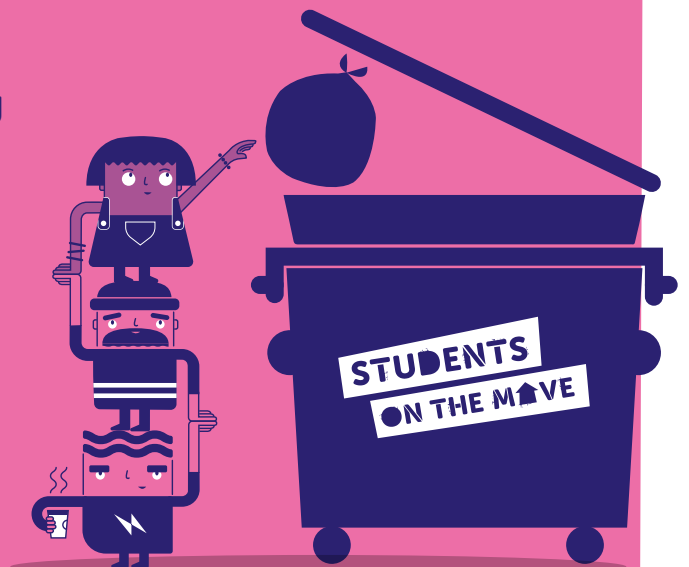
Bulky items can be collected from your door from just £25. To book your pick-up, visit bristol.gov.uk/bulkywaste

BIN IT

Can't rehome or recycle it? Start sorting early to avoid a stressful moving day.

Use your waste bin, an on-street Students On The Move bin or hire an extra large bin from us with your student discount. Leaving waste on the pavement could land you with a hefty fine and put your deposit at risk.

bristolwastecompany.co.uk/students



MY CHECKLIST

- ✓ **Take 5, grab a seat and read this leaflet**
- **Save for summer** by selling your preloved stuff.
- **Donate useful things** to the Big Give, the Reuse Shops or charity.
- **Use your student ID without proof of address or needing to book** to visit a recycling centre.
- **Don't have wheels?** Book a bulky waste collection from the council for as little as £25.
- **Check your bin day calendar** and put your bins out (with time to bring them in again) before you leave.
- **Use your student discount** to hire a huge 660l or 1100l bin for all your other rubbish. Ring 0800 061 4321.

Don't spoil your summer!

Your responsibilities

Your university expects you to be a considerate member of the community (which is pretty easy to do if you follow our checklist). University guidelines say that "non-compliance with council waste and recycling collection procedures (rubbish goes in the bin, not next to it) can lead to disciplinary action being taken". ...And that might put a downer on your summer plans.

Landlord's responsibilities

Your landlord needs to ensure your house is structurally sound, is safe and in good repair, and that there is gas, power and hot water. Your landlord is not responsible for rehoming the desk and bookshelves you don't want to take home with you.

Follow our advice above and get set for a stress-free moving day.

PSSST!

Don't risk your deposit by leaving rubbish in your garden or on the street!

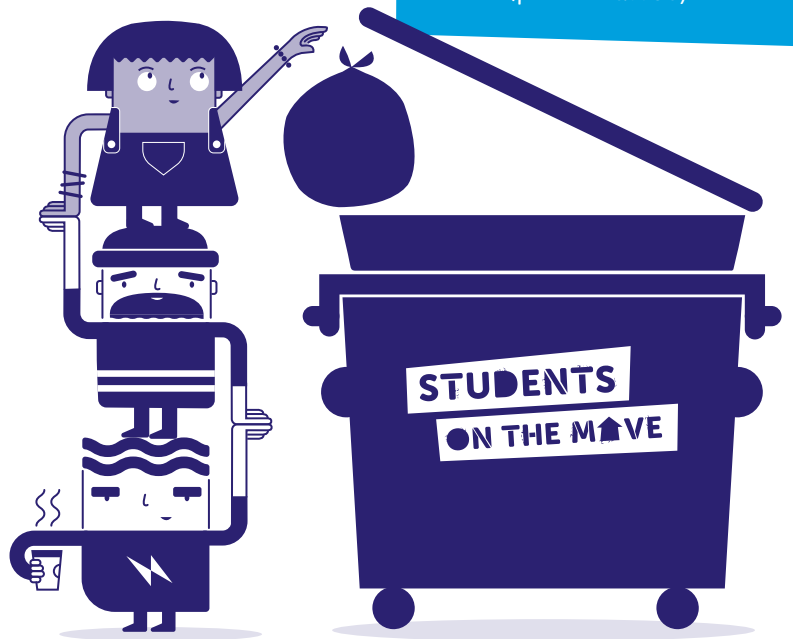
DON'T RISK LOSING YOUR DEPOSIT

if you can't sell, donate or recycle it, use your student discount to get a great deal on hiring a really big bin.

There's loads of space for you and your housemates to dispose of unwanted waste (the bins are 660l or 1100l). As long as it's within the weight limit, you can fill it with both recyclables and non-recyclables and it will be sorted by our crew.

All yours from just £65
Call now to book a bin!
0800 061 4321

You can also give us a call to book a house or garden clearance!
(price varies)



PSSST!

Waste left on the street, even if it's next to a full bin, is fly-tipping and may lead to a hefty fine.



Every year fines are handed out around student move-out time and failure to pay can lead to prosecution. If the bin is full, wait until it's empty before adding your rubbish. During the move-out period, our dedicated Students On The Move bins will be emptied every weekday.



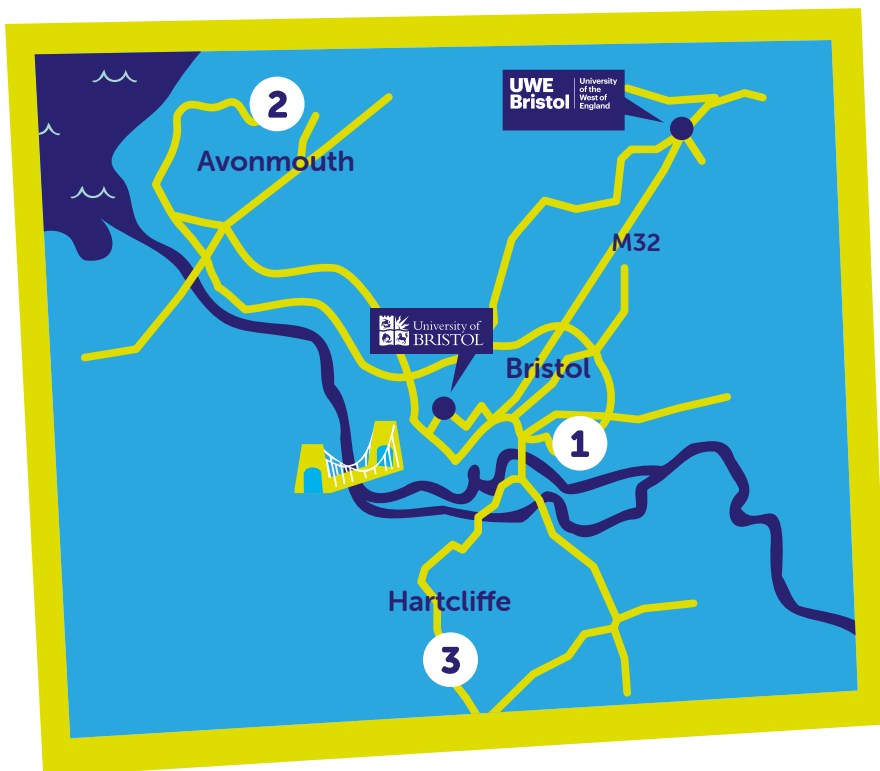
Bristol Waste, Bristol City Council and the universities are working together to support students on the move. To help with your waste, you're getting additional crews and waste disposal sites, easier access to recycling centres, discounts on bin hires and information on how to dispose of waste properly.



LOCATIONS

- 1 St Philips Reuse and Recycling Centre**
Folly Ln, Days Rd, Bristol BS2 0QS
- 2 Avonmouth Reuse and Recycling Centre**
Kings Weston Ln, Bristol, BS11 0YS
- 3 Hartcliffe Way Reuse and Recycling Centre**
Walk, cycle or drive to this site! 83 Hartcliffe Way, Bristol BS3 5RN

Find your nearest Students On The Move bin:
bristolwastecompany.co.uk/students/bins



USEFUL LINKS

Bristol City Council bin day finder: bristol.gov.uk/bins-recycling

Need more info about getting your recycling sorted?
Visit bristolwastecompany.co.uk/getitsorted



GET IN TOUCH!

Bristol Waste Company

Albert Road, Bristol BS2 0XS

general@bristolwastecompany.co.uk

bristolwastecompany.co.uk/students

BRISTOL
waste



UWE
Bristol | University
of the
West of
England