

STUDENTS

ON THE MOVE

# **SORT OUT FOR SUMMER**



***Don't risk  
losing your  
deposit***

***Start sorting out  
for summer now!***



# SELL IT

If it ain't broke, don't chuck it.  
Turn your preloved stuff into cash and fund your summer fun!  
Advertise it on a selling site.

We like:

**Depop**

**Gumtree**

**Ebay**

**Vinted**

**Facebook Marketplace**



# DONATE IT

Got a good-quality, preloved item but don't have time to sell it? Easy – donate it!



**Local charity shops**



**Bristol Waste Reuse Shop**

visit [bristolwastecompany.co.uk/reuse](http://bristolwastecompany.co.uk/reuse)



**British Heart Foundation**

visit [www.bhf.org.uk](http://www.bhf.org.uk)

**Bristol Big Give**

donation banks on campus

**Donate your old tech** search

Bristol Digital Inclusion Scheme



# RECYCLE IT



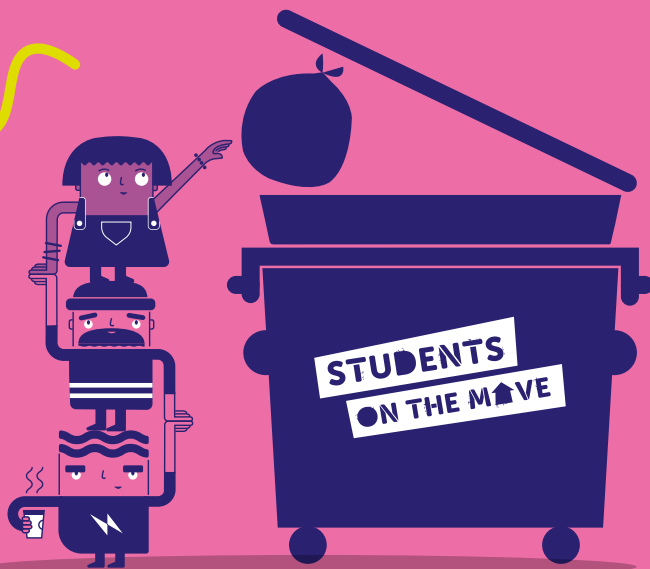
If it's not fit to reuse, do your bit to keep Bristol clean, green and safe for people and wildlife by sorting and recycling your unwanted stuff. Here's how:

**Kerbside recycling collections** happen every week, check [bristolwastecompany.co.uk/getitsorted](http://bristolwastecompany.co.uk/getitsorted) and fill up your boxes.

**Reuse and recycling centres** are a great one-stop shop. Take your student ID with you to get in without proof of address.

**Bulky items** can be collected from your door from just £25. To book your pick-up, visit [bristol.gov.uk/bulkywaste](http://bristol.gov.uk/bulkywaste)

# BIN IT



If you can't sell it, donate it or recycle it, do the right thing and put it in the bin!

Use your household wheelie bin or one of our dedicated Sort Out For Summer bins dotted around Bristol's streets in June and July. Find out more at [bristolwastecompany.co.uk/students](http://bristolwastecompany.co.uk/students) or use your student discount to hire a really big bin.

# MY CHECKLIST

- ✓ **Take 5, grab a seat and read this leaflet**
- **Save for summer** by selling your preloved stuff.
- **Donate useful things** to the Big Give, the Reuse Shops or charity.
- **Use your student discount** to hire a huge 660l or 1100l bin for your rubbish. Tel: 0800 061 4321.
- **Use your student ID without proof of address or needing to book** to visit a recycling centre.
- **Don't have wheels?** Book a bulky waste collection from the council for as little as £25.
- **Check your bin day calendar** and put your bins out (with time to bring them in again) before you leave.

## ***Don't spoil your summer!***

Your university expects you to be a considerate member of the community (which is pretty easy to do as long as you remember to put your rubbish **IN** the bin and not next to it). They say that "non-compliance with council waste and recycling collection procedures (again, rubbish goes in the bin, not next to it) can lead to disciplinary action being taken". And that might put a downer on your summer plans.

### **Landlord's responsibilities**

Your landlord needs to ensure your house is structurally sound, is safe and in good repair, and that there is gas, hot water and electricity. Your landlord is not responsible for that desk or bookcase you no longer need. Follow our advice above and get set for a stress-free moving day.

# **PSSST!**

**Don't risk your deposit by leaving rubbish in your garden or on the street!**

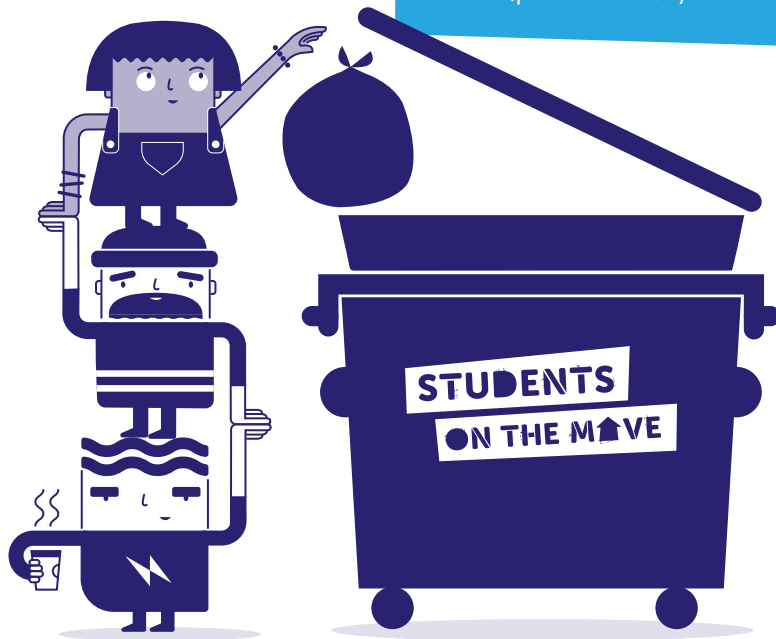
# DON'T RISK LOSING YOUR DEPOSIT

If you're still not sure what to do with your waste, use your student discount to get a great deal on hiring a really big bin.

There's loads of space for you and your housemates to dispose of unwanted waste (the bins are 660l or 1100l). As long as it's within the weight limit, you can fill it with both recyclables and non-recyclables and it will be sorted by our crew.

All yours from just £65  
Call now to book a bin!  
0800 061 4321

You can also give us a call to book a house or garden clearance!  
(price varies)



## PSSST!

Waste left on the street, even if it's next to a full bin, is fly-tipping and may lead to a hefty fine.



Every year fines are handed out around student move-out time and failure to pay can lead to prosecution. If the bin is full, wait until it's empty before adding your rubbish. During the move-out period, our dedicated Sort Out For Summer bins will be emptied every weekday.



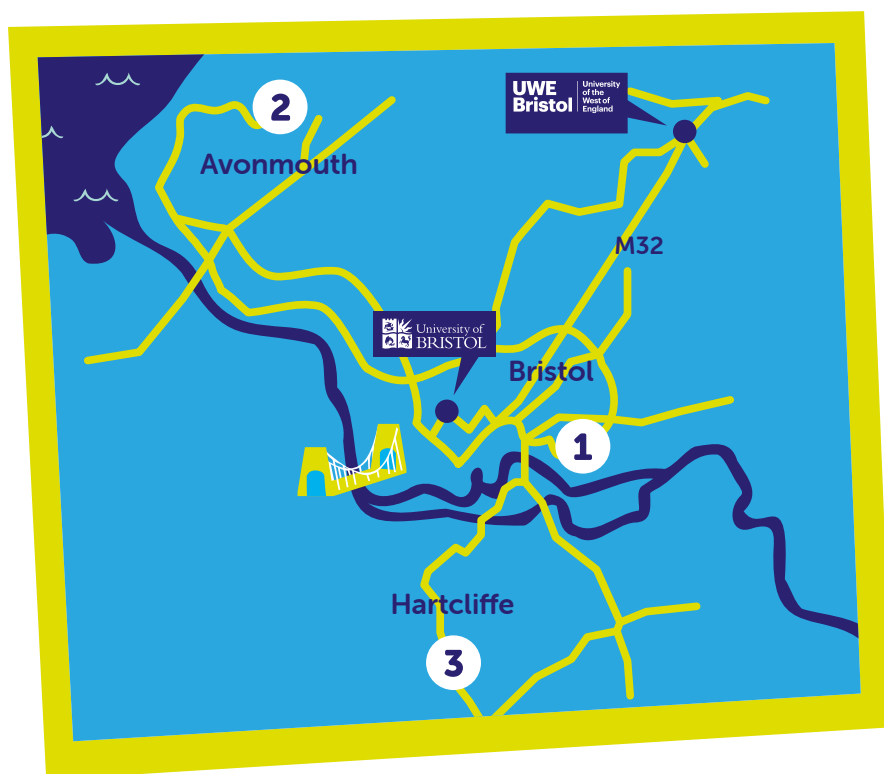
Bristol Waste, Bristol City Council and the universities are working together to support students on the move. To help with your waste, you're getting additional crews and waste disposal sites, easier access to recycling centres, discounts on bin hires and information on how to dispose of waste properly.



# LOCATIONS

- 1 St Philips Reuse and Recycling Centre**  
Folly Ln, Days Rd, Bristol BS2 0QS
- 2 Avonmouth Reuse and Recycling Centre**  
Kings Weston Ln, Bristol, BS11 0YS
- 3 Hartcliffe Way Reuse and Recycling Centre**  
Walk, cycle or drive to this site! 83 Hartcliffe Way, Bristol BS3 5RN

Find your nearest Students On The Move bin:  
[bristolwastecompany.co.uk/students/bins](http://bristolwastecompany.co.uk/students/bins)



# USEFUL LINKS

**Bristol City Council bin day finder:** [bristol.gov.uk/bins-recycling](http://bristol.gov.uk/bins-recycling)

**Need more info about getting your recycling sorted?**  
Visit [bristolwastecompany.co.uk/getitsorted](http://bristolwastecompany.co.uk/getitsorted)



**GET IN TOUCH!**

**Bristol Waste Company**

Albert Road, Bristol BS2 0XS

0117 304 9580

[general@bristolwastecompany.co.uk](mailto:general@bristolwastecompany.co.uk)

[bristolwastecompany.co.uk/students](http://bristolwastecompany.co.uk/students)

**BRISTOL**  
waste



**UWE**  
**Bristol** | University  
of the  
West of  
England