



# SELL IT

**If it ain't broke, don't chuck it.**

Turn your preloved stuff into cash and fund your summer fun by advertising it on a selling site.

We like:

Depop

Facebook Marketplace

Ebay

Gumtree

Vinted



# RECYCLE IT

**If it's not fit to resell, do your bit to keep Bristol clean, green and safe for people and wildlife by sorting and recycling your unwanted stuff. Here's how:**

**Kerbside recycling collections** happen every week, check [bristolwastecompany.co.uk/getitsorted](http://bristolwastecompany.co.uk/getitsorted) and fill up your boxes

**Reuse and recycling centres** are a great one-stop shop.

Take your student ID with you to get in without proof of address

**Bulky items** can be collected from your door for just £25 to £50.

To book your pick-up, visit [bristol.gov.uk/bulkywaste](http://bristol.gov.uk/bulkywaste)



# DONATE IT

**Got a good-quality, preloved but unwanted item but don't have time to sell it? Easy: donate it instead. Try...**

**Bristol Big Give** – donation banks can be found across the city and on campus;

**Local charity shops; Bristol Waste Reuse Shop** – visit [bristolwastecompany.co.uk/reuse](http://bristolwastecompany.co.uk/reuse) for more info;

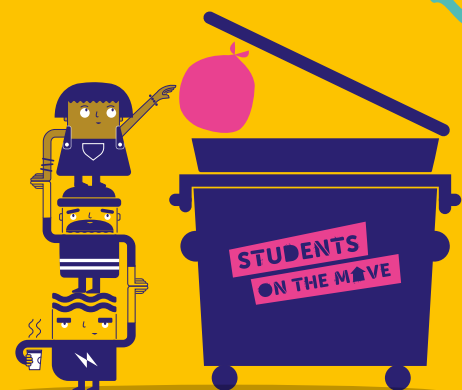
**Freecycle** – visit [freecycle.org](http://freecycle.org) to get started



# BIN IT

**If you can't sell it, recycle it or donate it, do the right thing and put it in the bin!**

Use your household wheelie bin or keep your eyes peeled for our dedicated Sort Out For Summer bins dotted around Bristol's streets in June and July. Find out more at [bristolwastecompany.co.uk/students](http://bristolwastecompany.co.uk/students) or use your student discount to hire an 1100l bin.

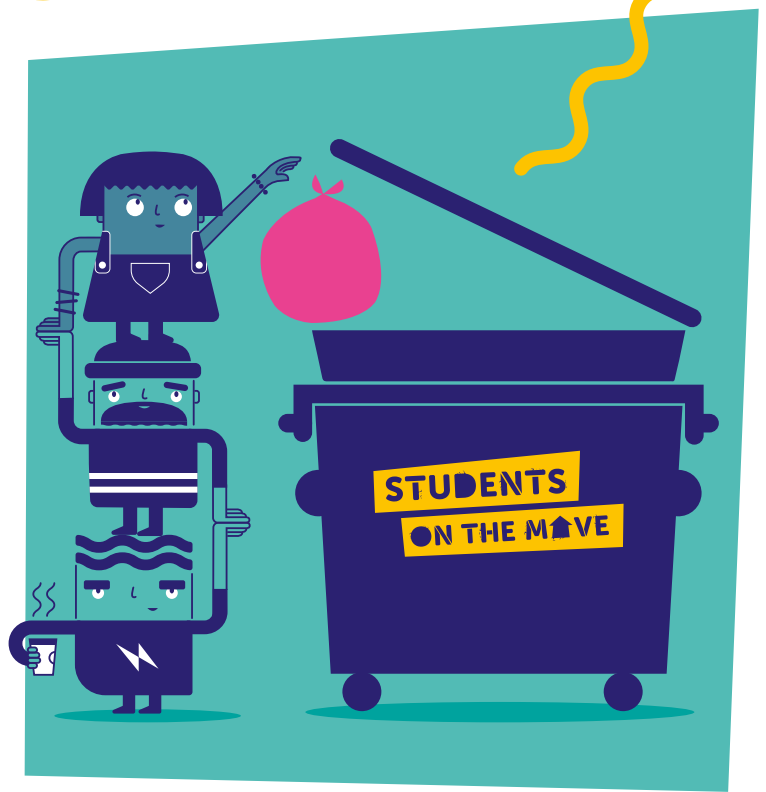


# DON'T RISK LOSING YOUR DEPOSIT!

If you're still not sure what to do with your waste, use your student discount to get a great deal on hiring an 1100l bin.

Loads of space for you and your housemates to dispose of unwanted waste. As long as it's within the weight limit, you can fill it with both recyclables and non-recyclables and it will be sorted by our crew!

All yours for just £45  
Call now to book a bin!  
0800 061 4321



Waste left on the street, even if it's next to a full bin, is fly-tipping and may lead to a hefty fine.



Every year fines are handed out around student move-out time and failure to pay can lead to prosecution. If the bin is full, wait until it's empty before adding your rubbish. During the move-out period, the Sort Out For Summer bins will be emptied twice a day.



Bristol Waste, Bristol City Council and the universities are working together to support students on the move with additional crews and waste disposal sites, easier access to the recycling centres, discounts on bin hires and information on how to dispose of waste properly.

# USEFUL INFO.

STUDENTS  
ON THE MOVE

## MY CHECKLIST

- ✔ Take 5, grab a seat and read this leaflet
- Save for summer by selling your preloved stuff
- Donate useful things to the Big Give, the Reuse Shop or charity
- Use your student discount to hire a huge 1100l bin for your move out rubbish. Tel: 0800 061 4321
- Use your student ID to visit one of the city's recycling centres
- Don't have wheels? Book a bulky waste collection from the council for as little as £25.
- Check your bin day calendar to make the most of your kerbside recycling and refuse collections. Don't forget to bring your bins and boxes back in after collections to keep the streets clear and accessible for others.

## LOCATIONS



- 1 St Philips Reuse and Recycling Centre**  
Folly Ln, Days Rd, Bristol BS2 0QS
- 2 Avonmouth Reuse and Recycling Centre**  
Home of the Reuse Shop, Kings Weston Lane, Bristol, BS11 0YS
- 3 Hartcliffe Way Reuse and Recycling Centre**  
– opening in June 2022 Check our website for updates: [www.bristolwastecompany.co.uk/hartcliffe-way-updates](http://www.bristolwastecompany.co.uk/hartcliffe-way-updates)

## DON'T SPOIL YOUR SUMMER!

Your university expects you to be a considerate member of the community (which is pretty easy to do as long as you remember to put your rubbish IN the bin and not next to it). They say that “non-compliance with council waste and recycling collection procedures” (again, rubbish goes in the bin, not next to it) can lead to disciplinary action being taken. And that might put a downer on your summer plans.

**Landlord's responsibilities** Your landlord needs to ensure your house is structurally sound, is safe and in good repair, and that there is gas, hot water and electricity. Your landlord is not responsible for that set of shelves you no longer need. Follow our advice above and get set for a stress-free moving day.

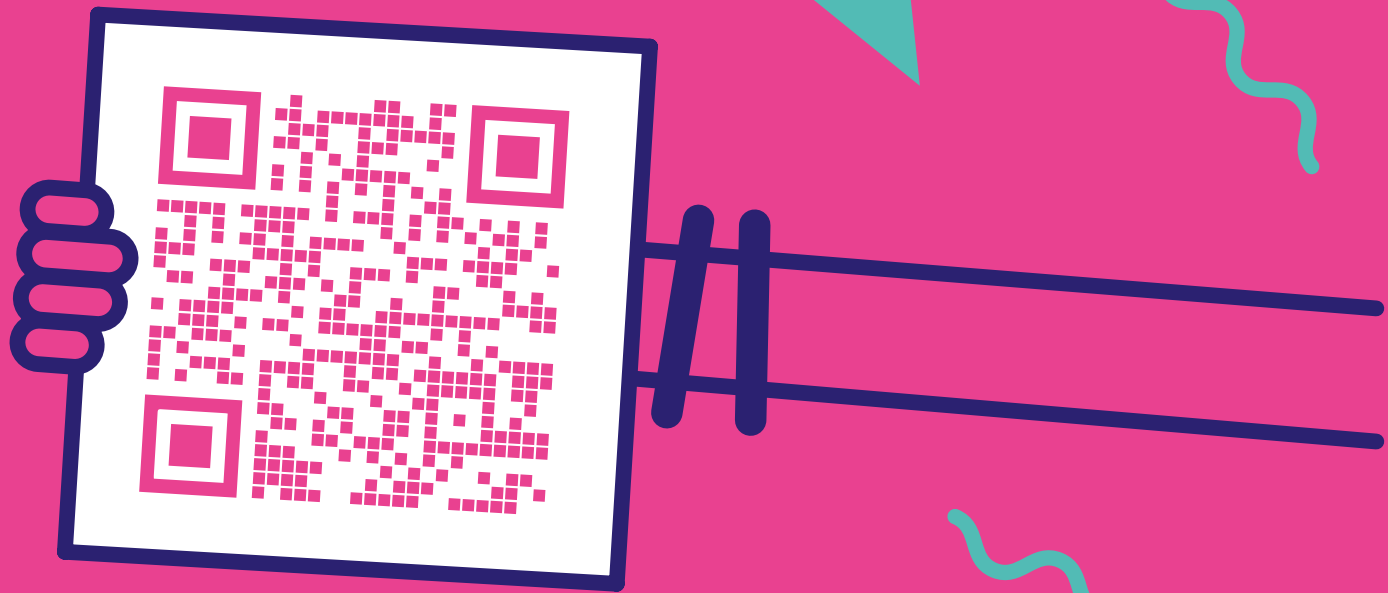
**Don't risk your deposit by leaving rubbish in your garden or on the street!**

**PSSST!**

## USEFUL LINKS

**Bristol city council bin day finder:** [www.bristol.gov.uk/bins-recycling](http://www.bristol.gov.uk/bins-recycling)

**Need more info about getting started?** [www.bristolwastecompany.co.uk/getitsorted](http://www.bristolwastecompany.co.uk/getitsorted)



**GET IN TOUCH**

Bristol Waste Company  
Albert Road, Bristol BS2 0XS  
0117 304 9580  
[general@bristolwastecompany.co.uk](mailto:general@bristolwastecompany.co.uk)  
[bristolwastecompany.co.uk/students](http://bristolwastecompany.co.uk/students)

**BRISTOL**  
waste



 University of  
**BRISTOL**

**UWE**  
**Bristol** | University  
of the  
West of  
England